

# TARAWOOD

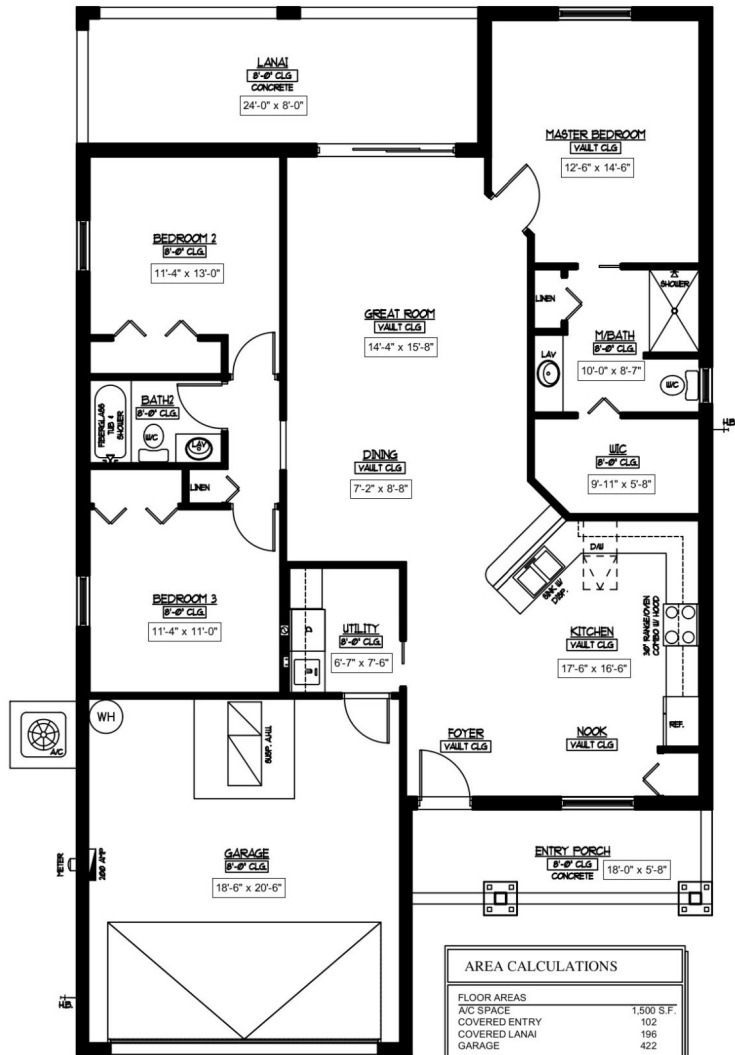
## THE CYPRESS

**Exterior**

- Concrete block construction
- 30 year dimensional shingles
- Aluminum soffit & fascia; vinyl siding on gable ends
- Double glaze insulated low E windows & sliding glass doors
- 14 seer high efficiency heat pump air conditioning system
- Overhead garage door with operator; 2 remotes & wall-mounted keypad
- Broom finish concrete driveway & sidewalks

**Interior**

- 2 hour consultation with interior decorator to make allowable selections
- Volume ceiling in main living area & kitchen
- Textured drywall knockdown ceilings & orange peel walls
- Flat white paint on ceilings; flat one-color paint on walls; white semi-gloss on doors, trim & baseboards
- Aristacraft cabinetry in kitchen & baths with soft close doors & drawers
- Granite countertop with under mount sinks throughout
- 3 1/4" colonial baseboards
- Lever door handles with choice of colors
- Vinyl ventilated shelving in all closets
- Vinyl wood plan flooring in kitchen, bath & living area
- Carpet in bedrooms
- Ceramic tile walk-in shower in master bath; fiberglass tub/shower in guest bath
- Porcelain sinks with Moen single lever faucets with spray
- Whirlpool kitchen appliances in stainless finish
- Refrigerator with water & icemaker in the door
- Ceiling fans with light kits in bedrooms & living room



AREA CALCULATIONS	
<b>FLOOR AREAS</b>	
A/C SPACE	1,500 S.F.
COVERED ENTRY	102
COVERED LANAI	196
GARAGE	422
<b>TOTAL AREAS</b>	
A/C SPACE	1,500 S.F.
NON-A/C SPACE	720 S.F.
TOTAL UNDER ROOF	2,220 S.F.

McLAUGHLIN  
CONSTRUCTION  
**THE CYPRESS**



**COLDWELL BANKER**  
**INVESTORS REALTY**  
352-726-9533

Prices, costs, and fees are estimates and may change at any time. Please speak to a new home sales agent for more information.